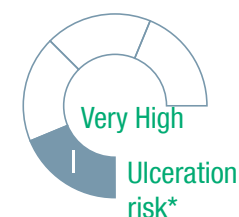


# Density900Mattress



Polyurethane HR + Viscoelastic



Lower density



Medium density



Frame density



Viscoelastic density



Natural latex free



Thermo-adaptable material



Conformed material



Breathable material



Material antialérgico

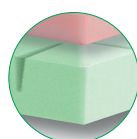
## + Mattress characteristics

Encapsulated mattress developed for therapeutic use in hospital environment, for patients with chronic pain with very high ulceration risk, as well as for mitigate pressure ulcers or sores up to stage III.

## + Technical specifications

Core height	16 cm.
Core weight	10'5 kg.
Maximum patient weight (MPW)	250 kg.
Ulceration risk	I - Very high
Available widths	80 / 85 / 90 cm.
Available lengths	180 / 190 / 200 cm.

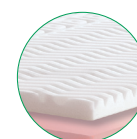
## + Core



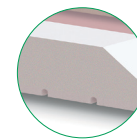
- 1 Polyurethane foam HR (30 kg/m<sup>3</sup>) lower layer. Base with 8cm. height. High porosity, which allows a high breathability and hygiene, avoiding humidity and maceration



- 2 Intermediate layer on HR polyurethane foam of 4cm. With more density at the base (35 kg/m<sup>3</sup>), that provides better comfort and stability.



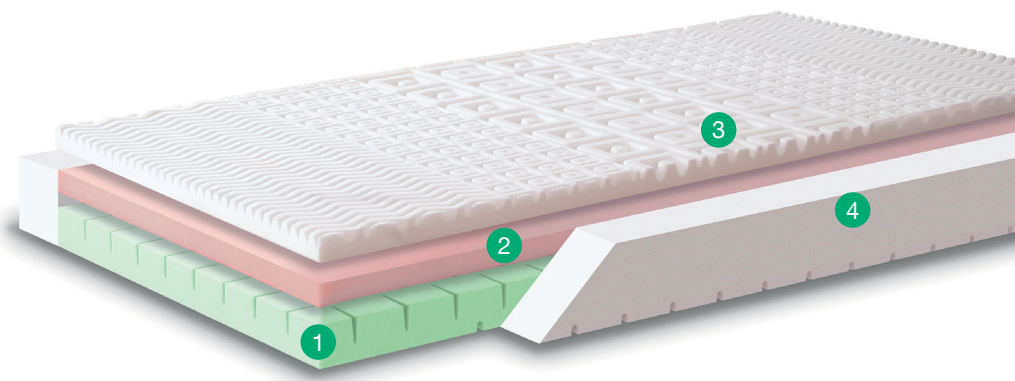
- 3 Upper layer made of thermo sensible viscoelastic foam (50kg/m<sup>3</sup>), 4cm. height. In contact with the body, the viscoelastic foam turns softer, keeping the same supporting level and endowing an excellent comfort levels.



- 4 HR polyurethane foam (40 kg/m<sup>3</sup>) frame. With 16 cm. height and 10 cm. width



## + Core characteristics



- The foam frame reinforces the mattress, ensuring the patient stability whilst turning on himself, guaranteeing the durability against the perimeter efforts and improving the comfort when sitting at the bed side.
- Upper layer conformed with different patterns, divided in 5 sections, depending in patients pressure areas, to improve the blood circulation and pressure of the patient.
- Mattress base framed, for an optimal adaptability of the mattress core.
- Transversal frame in the upper side of the base, for better patient comfort, increase elasticity and breathability of the core.
- All foams are Oeko-Tex class I and REACH certified.
- Symmetric core allows using indistinctly the head or feet areas
- OPTIONAL: Cut the mattress corners for better adaptability to beds.

## + Pressure map

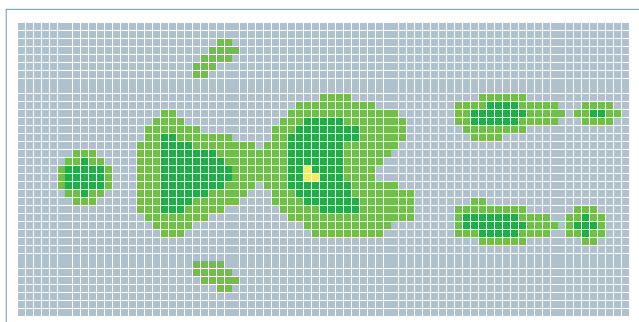
The contact pressure test shows that a Model user keeps in contact most parts of the body, no matter in the whatever position is taken, consequently there is a large contact surface between the mattress and the user, avoiding high pressure points that may cause pressure ulcers (bedsores).

The test prove that it is a mattress ideal to be used with long term bed-ridden patients, as it is very comfortable and adapted to the patient.

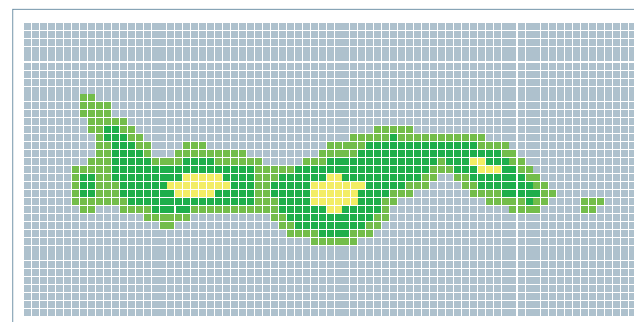
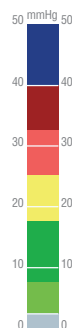
In positions such as supine or Fowler, the medium pressure showed didn't exceed 6 mmHg.

In other positions, lateral or seated, the Model didn't overcome 80 mmHg. on average, but it could be observed in the graphics the highest pressure points (17 mmHg.) on hip and shoulders areas.

Furthermore, for a greater patient comfort, this mattress is designed to be use preferably with phenolic bed bases.



Gender: Female. Weight: 65kg. Height: 170cm.



Gender: Female. Weight: 65kg. Height: 170cm.