

CartagoBariatric Armchair



Features

The armchairs are specially design to be used in hospitals, clinics, nursing homes and also in

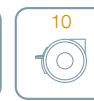
home care. This model is specially designed for bariatric patients.

The armchair comprises the following elements:

- Tubular metallic structure with polyester coating, with upholstered seat, backrest and footrest sections with multiple colour options.
- This metallic structure makes it robust and resistant to usage.
- The armchair can be articulated in two sections due to a gas spring driven by a lever located in one side of the armchair.
- Split backrest.
- It also has foldable armrest to allow side access.
- Extensible footrest incorporated.
- Maximum safety load 200 kg.



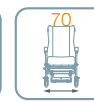
Gas spring



Ø Wheels



Max. length



Max. width



Total height



Seat height



Seat width



Backrest tilt



MPW



UNEN-BO-001
UNEN-BO-1488
UNEN-BO-1493
EN-0447/2015
GS-0011/2015
GA-2015/0182



EN-0447/2015



GS-0011/2015



GA-2015/0182

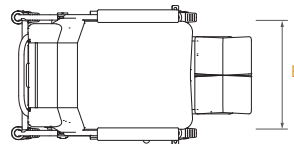
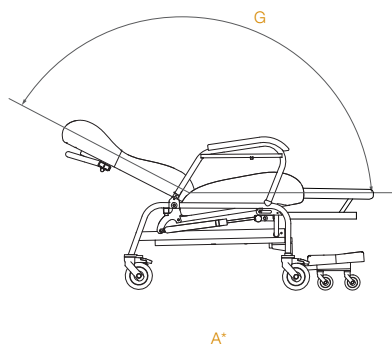
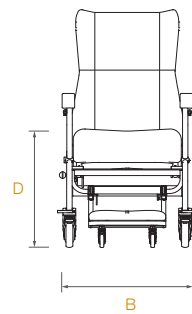
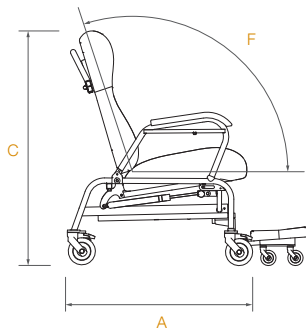


CartagoBariatric Armchair



Technical information

Total length (seated position) (A)	1150 mm.
Total width with armrests (B)	700 mm.
Total height (C)	1230 mm.
Seat height (D)	530 mm.
Seat width (E)	580 mm.
Maximum backrest tilting angle (relative to the seat) (F)	99°
Maximum reclined backrest tilting angle (relative to the seat) (G)	155°
Maximum patient weight (MPW)	200 kg.



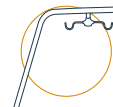
Standard

Transport



4 wheels

Accessories



IV Pole



Tank holder



Side table

Upholstery

Silvertex



Cream



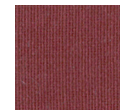
Shiitake



Safran



Orange



Wine



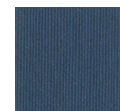
Red



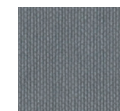
Pistacho



Delft

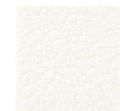


Sapphire

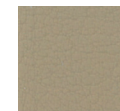


Titanium

Valencia



Weiss



Beige



Nectarine



Orange



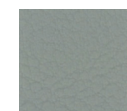
Rot



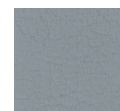
Delft



Jade



Laurel



Perle



Titan