

Density600Mattress



Polyurethane HR + Viscoelastic



Base density



Medium density



Viscoelastic density



Natural latex free



Thermo-adaptable material



Conformed material



Breathable material



Anti-allergy materia

+ Mattress characteristics

Sandwich type mattress for high ulceration patient, laying in bed for at least 15 hours per day, as well as for mitigate pressure ulcers or sores up to grade III.

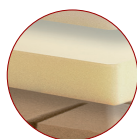
+ Technical specifications

| | |
|------------------------------|---------------------|
| Core height | 16 cm. |
| Core weight | 8'5 kg. |
| Maximum patient weight (MPW) | 250 kg. |
| Ulceration risk | II - High |
| Available widths | 80 / 85 / 90 cm. |
| Available lengths | 180 / 190 / 200 cm. |

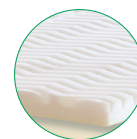
+ Core



- 1 HR polyurethane foam (38 kg/m³), 8 cm. Height. Its high porosity allows a great air circulation through the foam.



- 2 Intermediate layer made of HR polyurethane foam with more density (42 kg/m³) with 4 cm height, which provide more comfort and stability.



- 3 Thermo-sensitive viscoelastic foam (50 kg/m³) with 4 cm height for the upper layer. In contact with the body, the viscoelastic foam turns softer, keeping the same supporting level and endowing an excellent comfort levels.



Density600Mattress



+ Core characteristics



- Upper layer conformed with different patterns, divided in 5 sections, depending in patients pressure areas, to improve the blood circulation and pressure of the patient.
- Mattress base framed, for an optimal adaptability of the mattress core.
- Transversal frame in the upper side of the base, for better patient comfort, increases core elasticity.
- All foams are Oeko-Tex class I and REACH certified.
- Symmetric core allows using indistinctly the head or feet areas.
- OPTIONAL: Cut the mattress corners for better adaptability to beds.

+ Pressure map

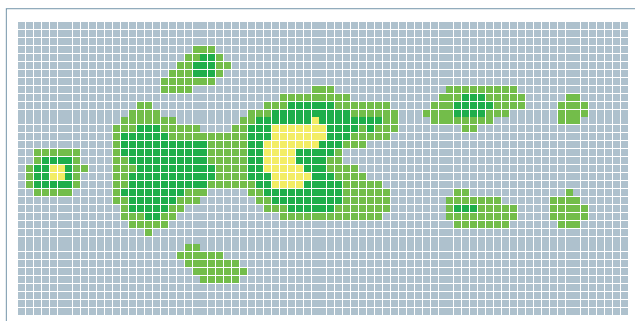
The contact pressure test shows that a Model user keeps in contact most parts of the body, no matter in the whatever position is taken, consequently there is a large contact surface between the mattress and the user, avoiding high pressure points that may cause pressure ulcers (bedsores).

The test prove that it is a mattress ideal to be used with long term bed-ridden patients, as it is very comfortable and adapted to the patient.

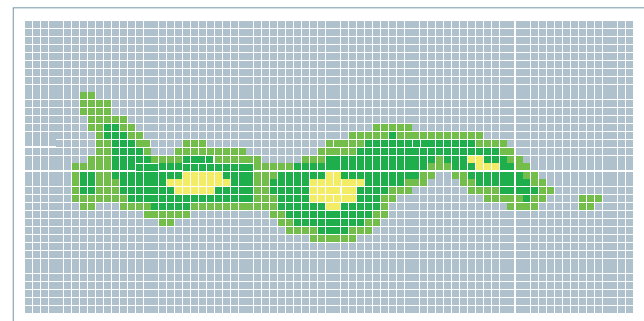
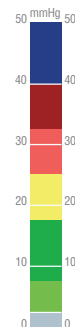
In all tested positions (supine, lateral, Fowler and seated) on this mattress the user didn't exceed the medium pressure showed 10 mmHg.

It could be observed in the graphics the highest pressure points (23 mmHg.) on hip, sacral and shoulders areas.

Furthermore, for a greater patient comfort, this mattress is designed to be use preferably with phenolic bed bases.



Gender: Female. Weight: 65kg. Height: 170cm.



Gender: Female. Weight: 65kg. Height: 170cm.