



Features

The armchairs are specially designed to be used in hospitals, clinics, nurse homes and home care.

Characteristics:

The armchair has a metallic tubular structure with polyester coating. With upholstered seat, backrest and legs section and the possibility to make it in different colours.

Transmission mechanisms made of steel with epoxy-polyester powder finish.

Vinyl fabric upholstery.

Fireproof M-2 according to test GRV-15.

Hygienic protection treatment against bacterial and fungus development.

Blood and urine resistant.

Functional characteristics:

Its metallic structure makes it robust and use resistant.

Two articulated sections by gas spring driven by a bilateral lever.

Folding armrest to allow side accessibility.

Extendible footrest incorporated.

Upholstered foam comfortable padding.

Backrest with ergonomic lumbar area.

Ergonomic tilting legs area.



Gas spring



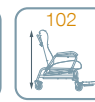
Ø Wheels



Max. length



Max. width



Total height



Seat height



Seat depth



Backrest tilt



Patient weight

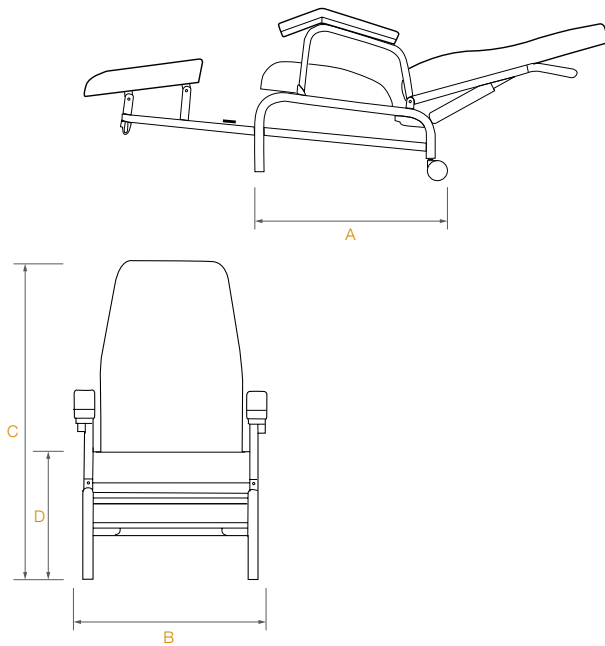


Deba Armchair



Technical information

Total length (seated position) (A)	720 mm.
Total length (tilted position)	1770 / 1990 mm.
Total width with armrests (B)	640 mm.
Total height (C)	1020 mm.
Seat height (D)	430 mm.
Seat width	500 mm.
Maximum backrest tilting angle (relative to the seat)	100°
Trendelenburg	15°
Armchair weight	25 kg.
Maximum patient weight (MPW)	140 kg.



Standard

Transport



4 wheels

Optional

Transport

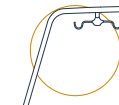


2 wheels



Legs

Accessories



IV Pole

Upholstery

Silvertex



Cream



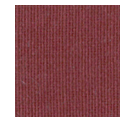
Shiitake



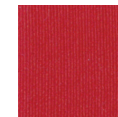
Safran



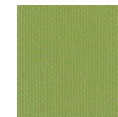
Orange



Wine



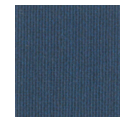
Red



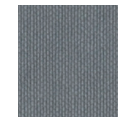
Pistacho



Delft

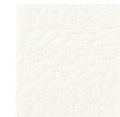


Sapphire

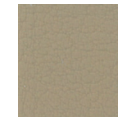


Titanium

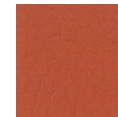
Valencia



Weiss



Beige



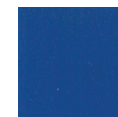
Nectarine



Orange



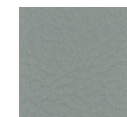
Rot



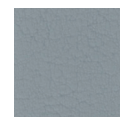
Delft



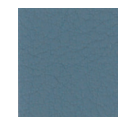
Jade



Laurel



Perle



Titan